

**625, 630, and 635
MOWER CONDITIONERS (NA)**



JOHN DEERE

PARTS CATALOG

**625, 630, and 635
MOWER CONDITIONERS (NA)**

PC9711 (JAN-11) English

John Deere Ottumwa Works

North American Edition

Litho in U.S.A. (Revised)

COPYRIGHT © 2011

DEERE & COMPANY

Moline, Illinois

All rights reserved

10-1

625,630 AND 635 SIDE-PULL MOWER CONDITIONERS (NORTH AMERICAN VERSION)

EP13604

-UN-06JUL07



*JOHN DEERE 625, 630 AND 635 MOWER-CONDITIONERS
(NORTH AMERICAN)
MANUFACTURED (2007 -)*

(SPECIFICATIONS AND DESIGN SUBJECT TO CHANGE WITHOUT NOTICE.)

10-2

625,630 AND 635 SIDE-PULL MOWER CONDITIONERS (NORTH AMERICAN VERSION)

SERIAL NUMBER LISTING INFORMATION

THE SERIAL NUMBER PLATE IS LOCATED ON THE TOP L.H. SIDE OF PLATFORM FRAME.

SERIAL NUMBER INFORMATION IS LISTED TO SHOW ON WHICH MACHINES EACH PART CAN BE USED; FOR EXAMPLE:

- THE PART CAN BE USED ON ALL MACHINES.
- 000000- THE PART CAN BE USED ON ALL MACHINES BEGINNING WITH THE SERIAL NUMBER LISTED.
- 000000 THE PART CAN BE USED ON ALL MACHINES UP TO AND INCLUDING THE SERIAL NUMBER LISTED.
- 000000-000000 THE PART CAN BE USED ON ALL MACHINES BETWEEN AND INCLUDING THE SERIAL NUMBERS LISTED.

WHEN XXXXXX'S ARE LISTED IN PLACE OF A SERIAL NUMBER, A SERIAL NUMBER CHANGE WAS MADE BUT THE EXACT SERIAL NUMBER WAS NOT AVAILABLE WHEN THE CATALOG WAS PRODUCED.

DIRECTION ARROW

ARROWS ARE USED WITH ILLUSTRATIONS TO INDICATE THE FRONT OF THE UNIT. "RIGHT-HAND" AND "LEFT-HAND" SIDES ARE DETERMINED BY FACING IN THE DIRECTION OF MACHINE FORWARD TRAVEL.

BOX-ENCLOSED ILLUSTRATIONS

A KEY NUMBER, SHOWN IN THE PARTS LIST, IS ASSIGNED TO A BOX ENCLOSING ALL PARTS SOLD AS A SERVICE ASSEMBLY.

COMPLETE GOODS LISTINGS

COMPLETE GOODS ARE LISTED IN BOLD FACE TYPE. ORDER SEPARATELY. DO NOT INCLUDE ON REPLACEMENT PARTS ORDER.

SI UNITS OF MEASURE

METRIC DIMENSIONS ARE GIVEN, WHERE APPLICABLE, THROUGHOUT THIS PARTS CATALOG.

HOSE DIMENSIONS LISTED ARE EITHER FITTING SIZE X LENGTH X FITTING SIZE OR I.D. X LENGTH.

**Thanks very much for your reading,
Want to get more information,
Please click here, Then get the complete
manual**

JustClickHere 

NOTE:

**If there is no response to click on the link above,
please download the PDF document first, and then
click on it.**

**Have any questions please write to me:
admin@servicemanualperfect.com**

10-3

625,630 AND 635 SIDE-PULL MOWER CONDITIONERS (NORTH AMERICAN VERSION)

SECTION INDEX

INTRODUCTION	10
LIGHTING SYSTEM	40
POWERSHAFT, GEAR CASE, DRIVE	50
HYDRAULIC CYLINDERS, HYDRAULIC COMPONENTS	70
TONGUE, FRAME, GUARDS	80
CUTTERBAR	100
IMPELLER, ROTARY ROLLS, DRIVE	110
SIDE PANELS, COMPRESSION ROLL	120
NUMERICAL INDEX	180

ALPHABETICAL INDEX

	PAGE		PAGE
A			
ACCESSORIES AND LIQUID GASKET	80-52	CUTTERBAR, RIGHT-HAND END	100-6
ANGLE TONGUE, EQUAL, DRIVELINE	50-16	CYLINDER, TILT	120-12
ANGLE TONGUE, EQUAL, UNIVERSAL JOINT SHAFT (BALL JOINT)	50-10	D	
ARM, FLOAT SPRING (LEFT-HAND SIDE)	80-32	DECALS	80-40
ARM, FLOAT SPRING (RIGHT-HAND SIDE)	80-34	DECALS	80-42
B			
BRACKET, SLOW MOVING VEHICLE	40-4	DECALS	80-48
C			
CARRIER FRAME	80-11	DECALS	80-50
CASE, GEAR, DRIVE LINES, ROTARY ROLLS CONDITIONER	110-10	DECALS (EQUAL ANGLE TONGUE AND PLATFORM)	80-46
CAT. 5 W/OVERRUNNING CLUTCH, DRIVELINE (1000 RPM)	50-20	DECALS (SWIVEL TONGUE)	80-44
CAT. 6 W/OVERRUNNING CLUTCH, DRIVELINE (540 RPM)	50-22	DECALS, NON TEXT	80-53
CLEARANCE LIGHTS, LEFT-HAND SIDE	40-4	DEFLECTOR FOR FORMING SHIELDS, FIXED REAR	80-30
CLEARANCE LIGHTS, RIGHT-HAND SIDE	40-6	DRAWBAR SHIELD	80-1
CLEVIS HITCH EXTENSION, EQUAL ANGEL TONGUE	80-6	DRIVE LINES, GEAR CASE, ROTARY ROLLS CONDITIONER	110-10
CLOCKWISE, INTERMEDIATE CUTTERBAR (625/630)	100-12	DRIVE, IMPELLER CONDITIONER	110-2
CLOCKWISE, INTERMEDIATE CUTTERBAR (635)	100-14	DRIVE, ROTARY ROLLS CONDITIONER	110-6
CONDITIONER DRIVE, IMPELLER	110-2	DRIVELINE, CONSTANT VELOCITY (1000 RPM)	50-20
CONDITIONER DRIVE, ROTARY ROLLS	110-6	DRIVELINE, CONSTANT VELOCITY (540 RPM)	50-22
CONDITIONER GEAR CASE, DRIVE LINES, ROTARY ROLLS	110-10	DRIVELINE, CUTTERBAR AND SHIELDING	100-2
CONDITIONER TENSIONING, ROTARY ROLLS(LH) SN 630(-370900) 635(-371600)	110-12	DRIVELINE, EQUAL ANGLE TONGUE	50-16
CONDITIONER TENSIONING, ROTARY ROLLS(LH) SN 630(370901-) 635(371601-)	110-14	DRIVELINE, SWIVEL TONGUE	50-18
CONDITIONER TENSIONING, ROTARY ROLLS(RH) SN 630(-370900) 635(-371600)	110-16	DRIVESHAF, EQUAL ANGLE TONGUE UNIVERSAL (1000 RPM)(BALL JOINT AND CLEVIS)	50-24
CONDITIONER TENSIONING, ROTARY ROLLS(RH) SN 630(370901-) 635(371601-)	110-18	DRIVESHAF, EQUAL ANGLE TONGUE UNIVERSAL (540 RPM)(BALL JOINT AND CLEVIS)	50-26
CONDITIONER, IMPELLER	110-4	DRIVESHAF, SWIVEL TONGUE UNIVERSAL (1000 RPM)	50-28
CONDITIONER, ROTARY ROLLS	110-8	E	
CONSTANT VELOCITY DRIVELINE (1000 RPM)	50-20	EQUAL ANGEL TONGUE CLEVIS HITCH EXTENSION	80-6
CONSTANT VELOCITY DRIVELINE (540 RPM)	50-22	EQUAL ANGLE HITCH EXTENSION	80-4
CONTROL, MECHANICAL HEADER TILT	120-10	EQUAL ANGLE TONGUE	80-14
COUNTERCLOCKWISE, INTERMEDIATE CUTTERBAR (625)	100-8	EQUAL ANGLE TONGUE DRIVELINE	50-16
COUNTERCLOCKWISE, INTERMEDIATE CUTTERBAR (630/635)	100-10	EQUAL ANGLE TONGUE UNIVERSAL DRIVESHAF (1000 RPM)(BALL JOINT AND CLEVIS)	50-24
CURTAINS, FRONT SHIELDS, FIXED SIDE SHIELDS, PLATFORM	80-16	EQUAL ANGLE TONGUE UNIVERSAL DRIVESHAF (540 RPM)(BALL JOINT AND CLEVIS)	50-26
CUTTERBAR BOLT, WRENCH	80-52	EQUAL ANGLE TONGUE UNIVERSAL JOINT SHAFT (BALL JOINT)	50-10
CUTTERBAR DRIVELINE AND SHIELDING	100-2	EQUAL ANGLE TONGUE UNIVERSAL JOINT SHAFT (CLEVIS - 1000 RPM)	50-12
CUTTERBAR GEAR CASE	100-4	EQUAL ANGLE TONGUE UNIVERSAL JOINT SHAFT (CLEVIS - 540 RPM)	50-14
CUTTERBAR, INTERMEDIATE (COUNTERCLOCKWISE)(625)	100-8	EQUAL ANGLE TONGUE, JACKSTAND	80-10
CUTTERBAR, INTERMEDIATE (COUNTERCLOCKWISE)(630/635)	100-10	EXTENSION, EQUAL ANGEL TONGUE CLEVIS HITCH	80-6
CUTTERBAR, INTERMEDIATE (CLOCKWISE) (625/630)	100-12	EXTENSION, EQUAL ANGLE HITCH	80-4
CUTTERBAR, INTERMEDIATE (CLOCKWISE) (635)	100-14	F	
CUTTERBAR, LEFT-HAND END	100-16	FIXED REAR DEFLECTOR FOR FORMING SHIELDS	80-30
		FIXED SIDE SHIELDS, FRONT SHIELDS AND CURTAINS, PLATFORM	80-16
		FLAP, IMPELLER SWATH	80-22
		FLAP, ROTARY ROLLS SWATH	80-24
		FLOAT SPRINGS, LEFT-HAND	80-32
		FLOAT SPRINGS, RIGHT-HAND	80-34
		FORMING SHIELDS	80-28

10-5

625,630 AND 635 SIDE-PULL MOWER CONDITIONERS (NORTH AMERICAN VERSION)

ALPHABETICAL INDEX - CONTINUED

PAGE		PAGE
	FORMING SHIELDS, FIXED REAR	
	DEFLECTOR.....	80-30
	FRAME AND SHIELDS, IMPELLER PLATFORM.....	120-2
	FRAME AND SHIELDS, ROTARY ROLLS PLATFORM.....	120-4
	FRAME, CARRIER.....	80-11
	FRONT SHIELDS, FIXED SIDE SHIELDS AND	
	CURTAINS, PLATFORM.....	80-16
	G	
	GASKET, LIQUID, ACCESSORIES.....	80-52
	GEAR CASE FOR SWIVEL TONGUE, LOWER PARTS.....	50-2
	GEAR CASE FOR SWIVEL TONGUE, UPPER PARTS.....	50-4
	GEAR CASE HARDWARE, SWIVEL TONGUE.....	50-6
	GEAR CASE, CUTTERBAR.....	100-4
	GEAR CASE, DRIVE LINES, ROTARY ROLLS	
	CONDITIONER.....	110-10
	GUARDS AND SHIELDS, IMPELLER.....	80-18
	GUARDS AND SHIELDS, ROTARY ROLLS.....	80-20
	H	
	HARNESSES, WIRING.....	40-2
	HEADER TILT CONTROL, MECHANICAL.....	120-10
	HITCH EXTENSION, EQUAL ANGLE.....	80-4
	HITCH, SWIVEL.....	80-2
	HOOD, IMPELLER.....	80-26
	HOSES, TILT CYLINDER HYDRAULIC.....	120-12
	HUB, WHEEL, SUSPENSION.....	80-36
	HYDRAULIC HEADER TILT CONTROL.....	120-12
	HYDRAULIC LIFT LOCK VALVE.....	70-8
	HYDRAULIC LIFT SYSTEM.....	70-6
	HYDRAULIC TONGUE POSITIONER, STANDARD.....	70-2
	HYDRAULIC TONGUE POSITIONER, STANDARD.....	70-4
	I	
	IMPELLER CONDITIONER.....	110-4
	IMPELLER CONDITIONER DRIVE.....	110-2
	IMPELLER GUARDS AND SHIELDS.....	80-18
	IMPELLER HOOD.....	80-26
	IMPELLER PLATFORM FRAME AND SHIELDS.....	120-2
	IMPELLER PLATFORM TOP SHIELDS.....	120-6
	IMPELLER SWATH FLAP.....	80-22
	INTERMEDIATE CUTTERBAR	
	(COUNTERCLOCKWISE)(625).....	100-8
	INTERMEDIATE CUTTERBAR	
	(COUNTERCLOCKWISE)(630/635).....	100-10
	INTERMEDIATE CUTTERBAR (CLOCKWISE)	
	(625/630).....	100-12
	INTERMEDIATE CUTTERBAR (CLOCKWISE)	
	(635).....	100-14
	J	
	JACKSTAND FOR EQUAL ANGLE TONGUE.....	80-10
	JACKSTAND FOR SWIVEL TONGUE.....	80-9
	JOINT SHAFT, UNIVERSAL, EQUAL ANGLE	
	TONGUE (BALL JOINT).....	50-10
	JOINT SHAFT, UNIVERSAL, SWIVEL TONGUE.....	50-8
	K	
	KIT, LIFT LOCK VALVE SEAL.....	70-8
	L	
	LABEL.....	80-39
	LIFT ARM (LEFT-HAND SIDE).....	80-32
	LIFT ARM (RIGHT-HAND SIDE).....	80-34
	LIFT SYSTEM, HYDRAULIC.....	70-6
	LIGHTS, CLEARANCE, LEFT-HAND SIDE.....	40-4
	LIGHTS, CLEARANCE, RIGHT-HAND SIDE.....	40-6
	LIMITER, TURN.....	80-8
	LINES, DRIVE, GEAR CASE, ROTARY ROLLS	
	CONDITIONER.....	110-10
	LIQUID GASKET, ACCESSORIES.....	80-52
	M	
	MECHANICAL HEADER TILT CONTROL.....	120-10
	N	
	NON TEXT DECALS.....	80-53
	P	
	PLATES, SKID.....	100-20
	PLATFORM FRAME AND SHIELDS, IMPELLER.....	120-2
	PLATFORM FRAME AND SHIELDS, ROTARY ROLLS.....	120-4
	PLATFORM FRONT SHIELDS, FIXED SIDE	
	SHIELDS AND CURTAINS.....	80-16
	PLATFORM TOP SHIELDS, IMPELLER.....	120-6
	PLATFORM TOP SHIELDS, ROLL.....	120-8
	POSITIONER, STANDARD HYDRAULIC TONGUE.....	70-2
	POSITIONER, STANDARD HYDRAULIC TONGUE.....	70-4
	R	
	REAR DEFLECTOR FOR FORMING SHIELDS,	
	FIXED.....	80-30
	RIM, WHEEL.....	80-38
	ROLL PLATFORM TOP SHIELDS.....	120-8
	ROLLS CONDITIONER DRIVE, ROTARY.....	110-6
	ROLLS CONDITIONER GEAR CASE, DRIVE LINES	
	ROTARY.....	110-10
	ROLLS CONDITIONER TENSIONING, ROTARY(LH)	
	SN 630(-370900) 635(-371600).....	110-12
	ROLLS CONDITIONER TENSIONING, ROTARY(LH)	
	SN 630(370901-) 635(371601-).....	110-14
	ROLLS CONDITIONER TENSIONING, ROTARY(RH)	
	SN 630(-370900) 635(-371600).....	110-16
	ROLLS CONDITIONER TENSIONING, ROTARY(RH)	
	SN 630(370901-) 635(371601-).....	110-18
	ROLLS CONDITIONER, ROTARY.....	110-8
	ROLLS GUARDS AND SHIELDS, ROTARY.....	80-20
	ROLLS PLATFORM FRAME AND SHIELDS, ROTARY.....	120-4
	ROLLS SWATH FLAP, ROTARY.....	80-24
	ROTARY ROLLS CONDITIONER.....	110-8
	ROTARY ROLLS CONDITIONER DRIVE.....	110-6
	ROTARY ROLLS CONDITIONER GEAR CASE,	
	DRIVE LINES.....	110-10

10-6

625,630 AND 635 SIDE-PULL MOWER CONDITIONERS (NORTH AMERICAN VERSION)

ALPHABETICAL INDEX - CONTINUED

	PAGE		PAGE
ROTARY ROLLS CONDITIONER TENSIONING,(LH)		SYSTEM, HYDRAULIC LIFT	70-6
SN 630(-370900) 635(-371600)	110-12		
ROTARY ROLLS CONDITIONER TENSIONING,(LH)		T	
SN 630(370901-) 635(371601-)	110-14	TENSIONING, ROTARY ROLLS CONDITIONER(LH)	
ROTARY ROLLS CONDITIONER TENSIONING,(RH)		SN 630(-370900) 635(-371600)	110-12
SN 630(-370900) 635(-371600)	110-16	TENSIONING, ROTARY ROLLS CONDITIONER(LH)	
ROTARY ROLLS CONDITIONER TENSIONING,(RH)		SN 630(370901-) 635(371601-)	110-14
SN 630(370901-) 635(371601-)	110-18	TENSIONING, ROTARY ROLLS CONDITIONER(RH)	
ROTARY ROLLS GUARDS AND SHIELDS	80-20	SN 630(-370900) 635(-371600)	110-16
ROTARY ROLLS PLATFORM FRAME AND SHIELDS	120-4	TENSIONING, ROTARY ROLLS CONDITIONER(RH)	
ROTARY ROLLS PLATFORM TOP SHIELDS	120-8	SN 630(370901-) 635(371601-)	110-18
ROTATING STRIPPER, LEFT-HAND END	100-16	TILT CONTROL, MECHANICAL HEADER	120-10
ROTATING STRIPPER, RIGHT-HAND END	100-6	TILT CYLINDER	120-12
		TONGUE DRIVELINE, EQUAL ANGLE	50-16
S		TONGUE DRIVELINE, SWIVEL	50-18
SAFETY SIGN	80-39	TONGUE POSITIONER, STANDARD HYDRAULIC	70-2
SHAFT, EQUAL ANG. TONGUE UNIVERSAL JOINT		TONGUE POSITIONER, STANDARD HYDRAULIC	70-4
(CLEVIS - 1000 RPM)	50-12	TONGUE UNIVERSAL JOINT SHAFT, EQUAL	
SHAFT, EQUAL ANG. TONGUE UNIVERSAL JOINT		ANGLE (BALL JOINT)	50-10
(CLEVIS - 540 RPM)	50-14	TONGUE UNIVERSAL JOINT SHAFT, EQUAL ANG.	
SHAFT, UNIVERSAL JOINT, EQUAL ANGLE		(CLEVIS - 1000 RPM)	50-12
TONGUE (BALL JOINT)	50-10	TONGUE UNIVERSAL JOINT SHAFT, EQUAL ANG.	
SHAFT, UNIVERSAL JOINT, SWIVEL TONGUE	50-8	(CLEVIS - 540 RPM)	50-14
SHIELD, DRAWBAR	80-1	TONGUE UNIVERSAL JOINT SHAFT, SWIVEL	50-8
SHIELD, EQUAL ANGLE TONGUE DRIVELINE	50-16	TONGUE, EQUAL ANGLE	80-14
SHIELDING, CUTTERBAR DRIVELINE	100-2	TONGUE, EQUAL ANGLE, JACKSTAND	80-10
SHIELDS, FIXED SIDE, FRONT SHIELDS AND		TONGUE, SWIVEL	80-12
CURTAINS, PLATFORM	80-16	TONGUE, SWIVEL, GEAR CASE, LOWER PARTS	50-2
SHIELDS, FORMING	80-28	TONGUE, SWIVEL, GEAR CASE, UPPER PARTS	50-4
SHIELDS, FORMING, FIXED REAR		TONGUE, SWIVEL, JACKSTAND	80-9
DEFLECTOR	80-30	TOP SHIELDS, IMPELLER PLATFORM	120-6
SHIELDS, FRAME, IMPELLER PLATFORM	120-2	TOP SHIELDS, PLATFORM	120-8
SHIELDS, FRAME, ROTARY ROLLS PLATFORM	120-4	TURN LIMITER	80-8
SHIELDS, FRONT, FIXED SIDE SHIELDS AND			
CURTAINS, PLATFORM	80-16	U	
SHIELDS, GUARDS, IMPELLER	80-18	UNIVERSAL DRIVESHAFT, EQUAL ANGLE TONGUE	
SHIELDS, GUARDS, ROTARY ROLLS	80-20	(1000 RPM)(BALL JOINT AND CLEVIS)	50-24
SHIELDS, TOP, IMPELLER PLATFORM	120-6	UNIVERSAL DRIVESHAFT, EQUAL ANGLE TONGUE	
SHIELDS, TOP, PLATFORM	120-8	(540 RPM)(BALL JOINT AND CLEVIS)	50-26
SHOES, SKID	100-19	UNIVERSAL DRIVESHAFT, SWIVEL TONGUE	
SIDE SHIELDS, FIXED, FRONT SHIELDS AND		(1000 RPM)	50-28
CURTAINS, PLATFORM	80-16	UNIVERSAL JOINT SHAFT, EQUAL ANGLE	
SKID PLATES	100-20	TONGUE (BALL JOINT)	50-10
SKID SHOES	100-19	UNIVERSAL JOINT SHAFT, SWIVEL TONGUE	50-8
SMV BRACKET	40-4		
SMV SIGN	40-4	V	
SPRINGS, FLOAT, LEFT-HAND	80-32	VALVE	
SPRINGS, FLOAT, RIGHT-HAND	80-34	(STANDARD HYDRAULIC TONGUE POSITIONER)	70-5
STANDARD HYDRAULIC TONGUE POSITIONER	70-2	VALVE, HYDRAULIC LIFT LOCK	70-8
STANDARD HYDRAULIC TONGUE POSITIONER	70-4	VALVE, TIRE, STEM	80-38
STRIPPER, ROTATING, LEFT-HAND END	100-16		
STRIPPER, ROTATING, RIGHT-HAND END	100-6	W	
SUSPENSION, WHEEL HUB	80-36	WHEEL HUB SUSPENSION	80-36
SWATH FLAP, IMPELLER	80-22	WHEELS	80-38
SWATH FLAP, ROTARY ROLLS	80-24	WIRING HARNESSES	40-2
SWIVEL HITCH	80-2	WRENCH, CUTTERBAR BOLT	80-52
SWIVEL TONGUE	80-12		
SWIVEL TONGUE DRIVELINE	50-18		
SWIVEL TONGUE GEAR CASE HARDWARE	50-6		
SWIVEL TONGUE UNIVERSAL DRIVESHAFT			
(1000 RPM)	50-28		
SWIVEL TONGUE UNIVERSAL JOINT SHAFT	50-8		
SWIVEL TONGUE, GEAR CASE, LOWER PARTS	50-2		
SWIVEL TONGUE, GEAR CASE, UPPER PARTS	50-4		
SWIVEL TONGUE, JACKSTAND	80-9		

40-1

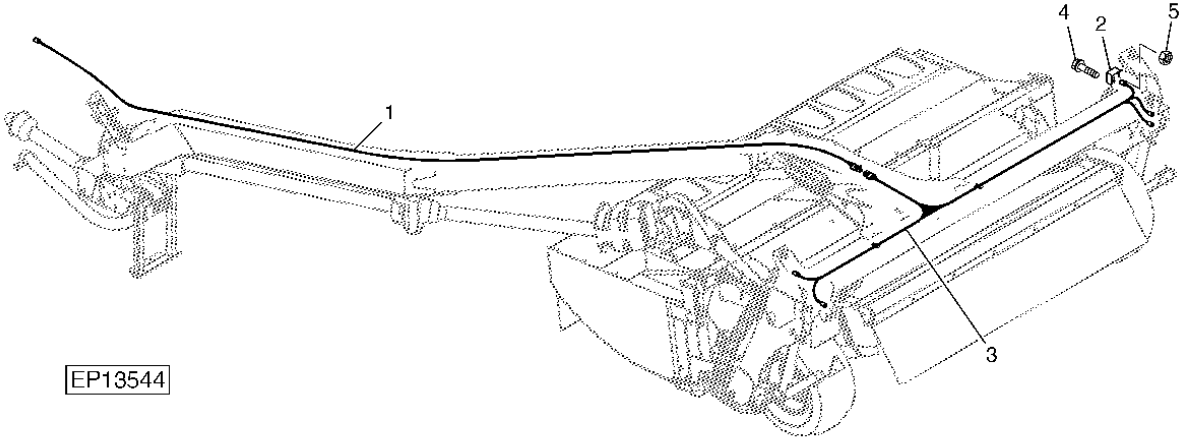
LIGHTING SYSTEM

MEMORANDA

40-2

WIRING HARNESS

EP13544 -UN-31MAY07



EP13544

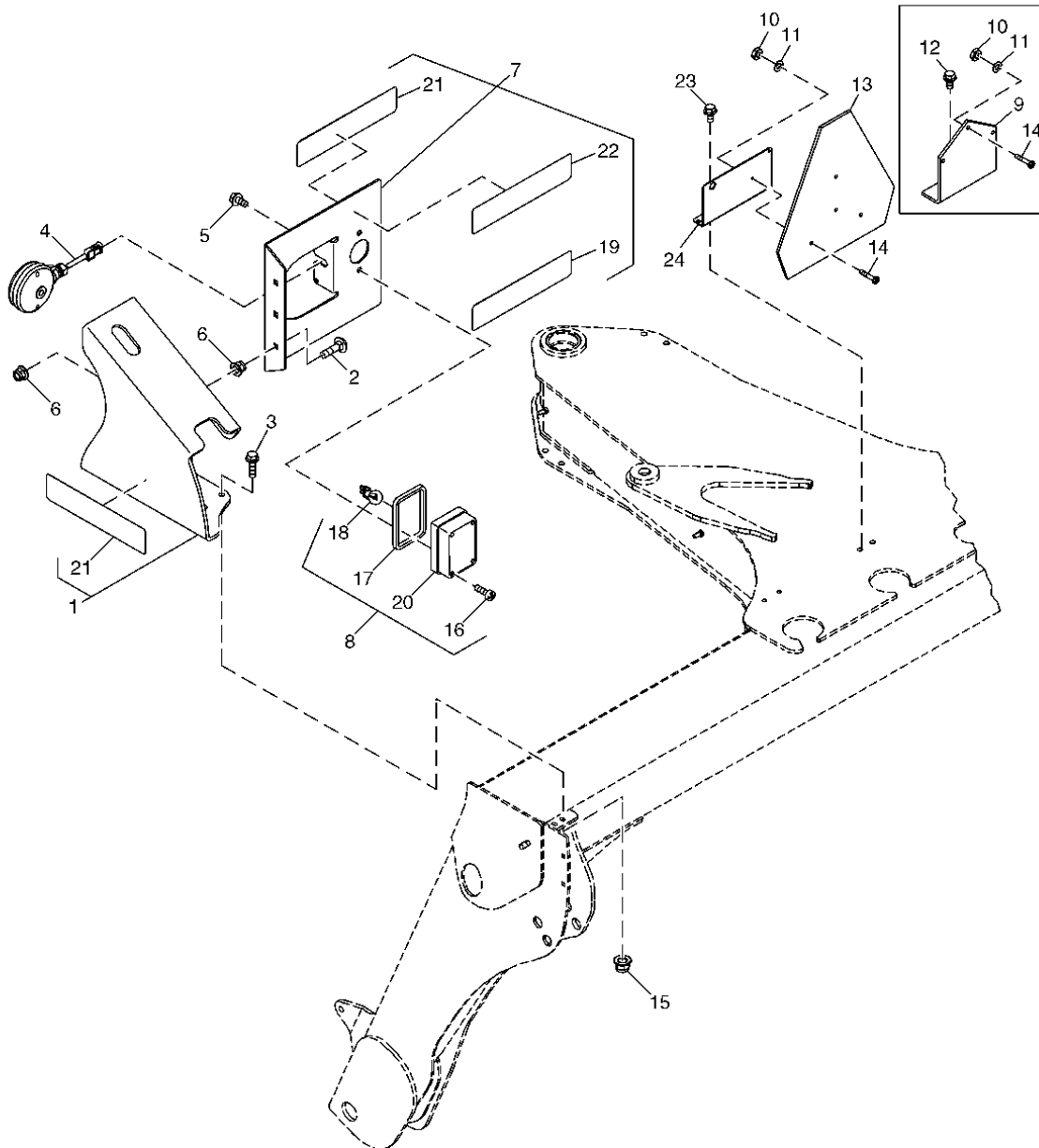
40-3

LIGHTING SYSTEM

KEY	PART NO.	PART NAME	QTY.	SERIAL NO.	6 6 6 2 3 3 5 0 5	REMARKS
1	AE71523	WIRING HARNESS	1		X X X	
2	RE152269	MODULE	1		X X X	
3	AFH201550	WIRING HARNESS	1		X X X	
4	19M7374	CAP SCREW	1		X X X	M6 X 40
5	14M7528	LOCK NUT	1		X X X	M6

CLEARANCE LIGHTS (LEFT-HAND SIDE)

EP14484 -UN-06JAN09



EP14484

THIS PARTS LISTING IS CONTINUED

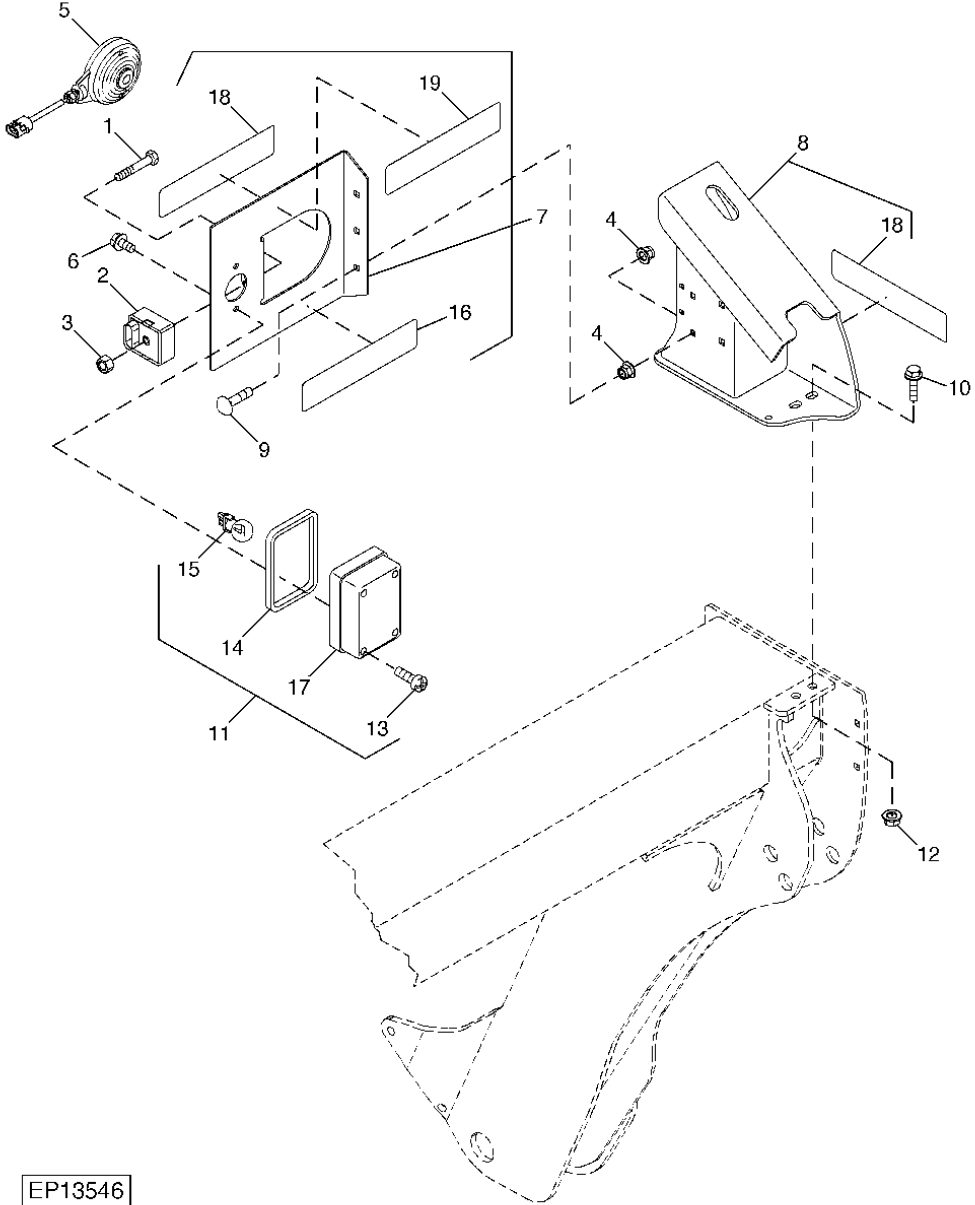
40-5

LIGHTING SYSTEM

KEY	PART NO.	PART NAME	QTY.	SERIAL NO.	6 6 6 2 3 3 5 0 5	REMARKS
1	AFH202336	SUPPORT	1		X X X	
2	03M7185	BOLT	2		X X X	M8 X 25
3	19M7790	SCREW	2		X X X	M12 X 35
4	AH164497	LAMP	2		X X X	
5	19M7865	SCREW	2		X X X	M8 X 16
6	14M7298	FLANGE NUT	4		X X X	M8
7	AFH202327	BRACKET	1		X X X	
8	AA45031	LAMP	1		X X X	
9	FH301590	BRACKET	1	-350000	X X X	
10	14H778	NUT	3	-350000	X X X	0.190"
	14H778	NUT	2	350001-	X X X	0.190"
11	12M7060	WASHER	3	-350000	X X X	5.300 MM
	12M7060	WASHER	2	350001-	X X X	5.300 MM
12	19M7407	CAP SCREW	2	-350000	X X X	M8 X 25
13	JD5929	SMV EMBLEM	1		X X X	
14	21H1312	SCREW	3	-350000	X X X	0.190" X 1"
	21H1312	SCREW	2	350001-	X X X	0.190" X 1"
15	14M7401	LOCK NUT	2		X X X	M12
16	A63635	SCREW	4		X X X	
17	A63127	GASKET	1		X X X	
18	H133384	BULB	1		X X X	
19	JD5922	REFLECTOR	1		X X X	ORANGE
20	A62454	LENS	1		X X X	RED
21	JD5921	REFLECTOR	2		X X X	YELLOW
22	JD5920	REFLECTOR	1		X X X	RED
23	R117041	SCREW	2	350001-	X X X	
24	FH304811	BRACKET	1	350001-	X X X	

CLEARANCE LIGHTS (RIGHT-HAND SIDE)

EP13546 -UN-21AUG07



EP13546

40-7

LIGHTING SYSTEM

KEY	PART NO.	PART NAME	QTY.	SERIAL NO.	REMARKS
					6 6 6
					2 3 3
					5 0 5
1	19M7374	CAP SCREW	1		X X X M6 X 40
2	RE152269	MODULE	1		X X X
3	14M7528	LOCK NUT	1		X X X M6
4	14M7298	FLANGE NUT	4		X X X M8
5	AH164497	LAMP	2		X X X
6	19M7865	SCREW	12		X X X M8 X 16
7	AFH202326	BRACKET	1		X X X
8	AFH202335	SUPPORT	1		X X X
9	03M7185	BOLT	2		X X X M8 X 25
10	19M7790	SCREW	2		X X X M12 X 35
11	AA45031	LAMP	1		X X X
12	14M7401	LOCK NUT	2		X X X M12
13	A63635	SCREW	4		X X X
14	A63127	GASKET	1		X X X
15	H133384	BULB	1		X X X
16	JD5922	REFLECTOR	1		X X X ORANGE
17	A62454	LENS	1		X X X RED
18	JD5921	REFLECTOR	2		X X X YELLOW
19	JD5920	REFLECTOR	1		X X X RED

40-8

LIGHTING SYSTEM

MEMORANDA

50-1

POWERSHAFT, GEAR CASE, DRIVE

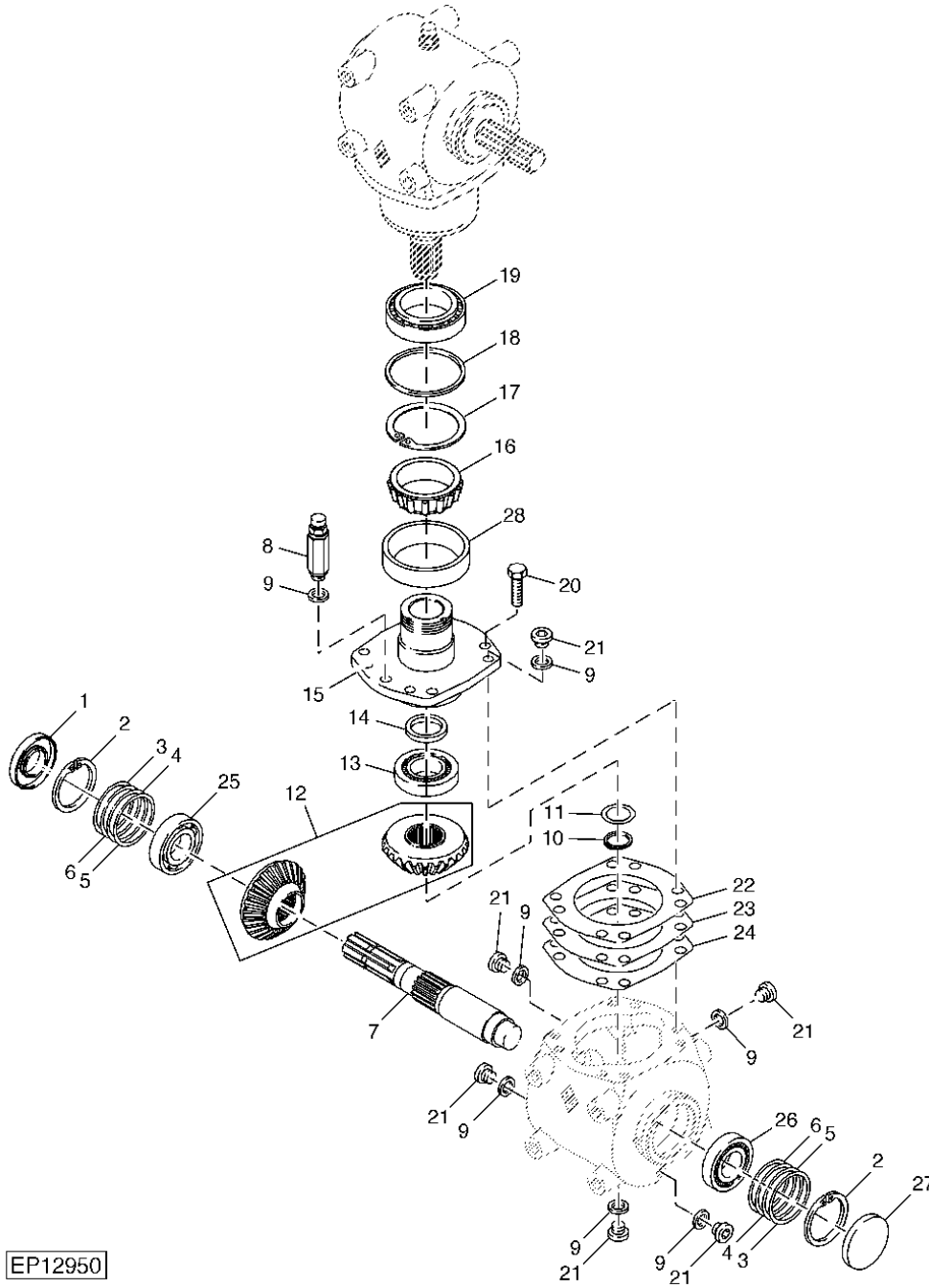
MEMORANDA

50-2

POWERSHAFT, GEAR CASE, DRIVE

GEAR CASE FOR SWIVEL TONGUE, LOWER PARTS

EP12950 -UN-06JUN05



EP12950

50-3

POWERSHAFT, GEAR CASE, DRIVE

KEY	PART NO.	PART NAME	QTY.	SERIAL NO.	6 6 6	REMARKS
					2 3 3	
					5 0 5	
1	DC39715	SEAL	1		X X	
2	CC53221	SNAP RING	2		X X	
3	CC39721	SHIM	2		X X	TK = 2 MM
4	CC39720	SHIM	2		X X	TK = 0.5 MM
5	CC39719	SHIM	3		X X	TK = 0.3 MM
6	CC39718	SHIM	3		X X	TK = 0.1 MM
7	CC50314	SHAFT	1		X X	
8	DC39734	BREATHER	1		X X	
9	51M4238	SEALING RING	6		X X	
10	40M7109	SNAP RING	1		X X	
11	24M6560	WASHER	1		X X	35 X 45 X 2.500 MM
12	DC50202	BEVEL GEAR DRIVE	1		X X	
13	JD37049	TAPERED ROLLER BEARING	1		X X	
14	48M7035	SEAL	1		X X	
15	FH302145	HUB	1		X X	
16	AZ43476	BEARING CONE	1		X X	
17	40M7118	SNAP RING	1		X X	
18	CC39724	THRUST WASHER	1		X X	
19	JD10063	TAPERED ROLLER BEARING	1		X X	
20	19M8704	SCREW	6		X X	M12 X 35
21	CC39727	DRAIN PLUG	5		X X	
22	CC39707	SHIM	1		X X	TK = 0.19 MM
23	CC39708	SHIM	1		X X	TK = 0.25 MM
24	CC39709	SHIM	1		X X	TK = 0.35 MM
25	AE49988	TAPERED ROLLER BEARING	1		X X	
26	AE46875	TAPERED ROLLER BEARING	1		X X	
27	CC39728	CAP	1		X X	
28	Z55493	BEARING CUP	1		X X	